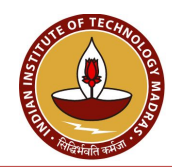




# **Prime Minister's Research Fellows (PMRF) Scheme**

## **Dec 2025 PMRF Annual review**



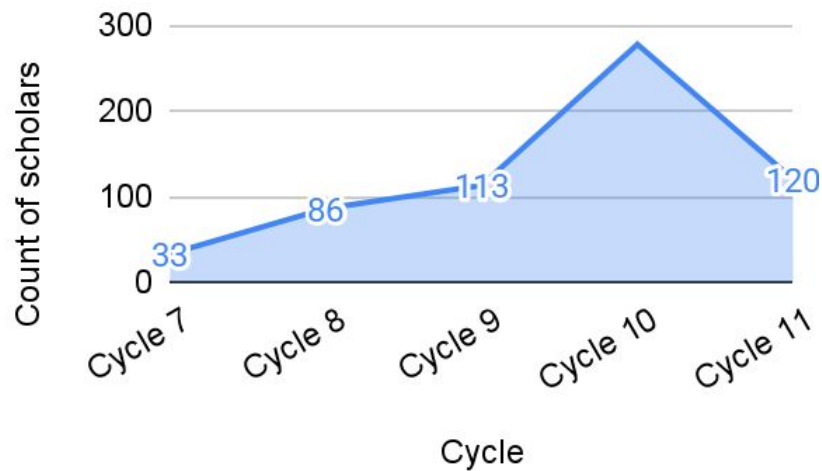
# Process / Timelines

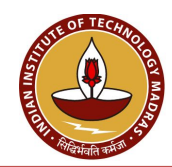
Activity	Start date	End date	Extension
Review application & presentation submission by scholars	01 - Nov - 2025	07 - Nov - 2025	
Submission of LoR by advisors	01 - Nov - 2025	08 - Nov - 2025	
PMRF online review period	10 - Nov - 2025	23 - Dec - 2025	01 - Jan - 2026
Uploading of review grades and comments by reviewers		23 - Dec - 2025	01 - Jan - 2026
Finalization of review grades by Subject Coordinators		30 - Dec - 2025	04 - Jan - 2026
Final approval of review grades by Nodal Coordinator		02 - Jan - 2026	05 - Jan - 2026
Nodal coordinator's meeting		06 - Jan - 2026	08 - Jan - 2026
NCC Meeting & result declaration		13 - Jan - 2026	



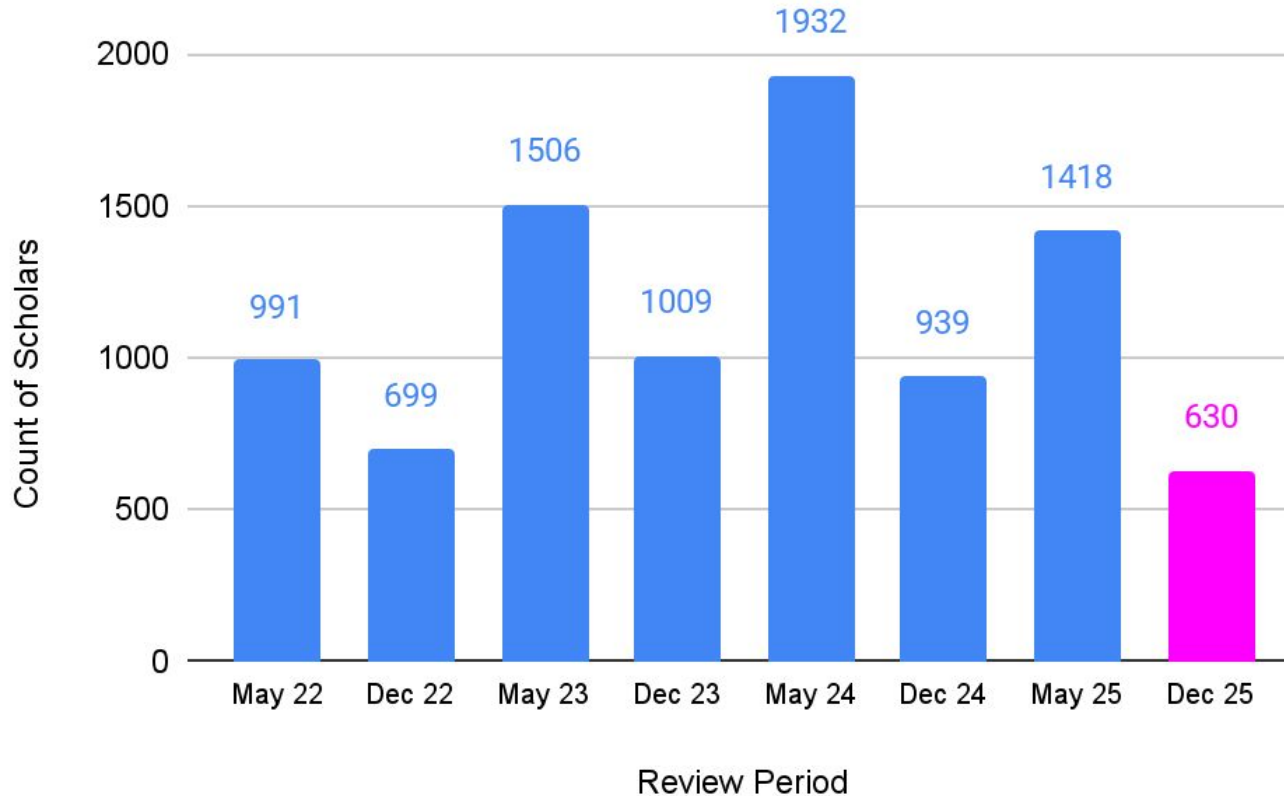
# Dec 25 - Count of Scholars

Cycle	Direct	Lateral	Grand Total
Cycle 7	33		33
Cycle 8		86	86
Cycle 9	113		113
Cycle 10	1	277	278
Cycle 11	118	2	120
Grand Total	265	365	630



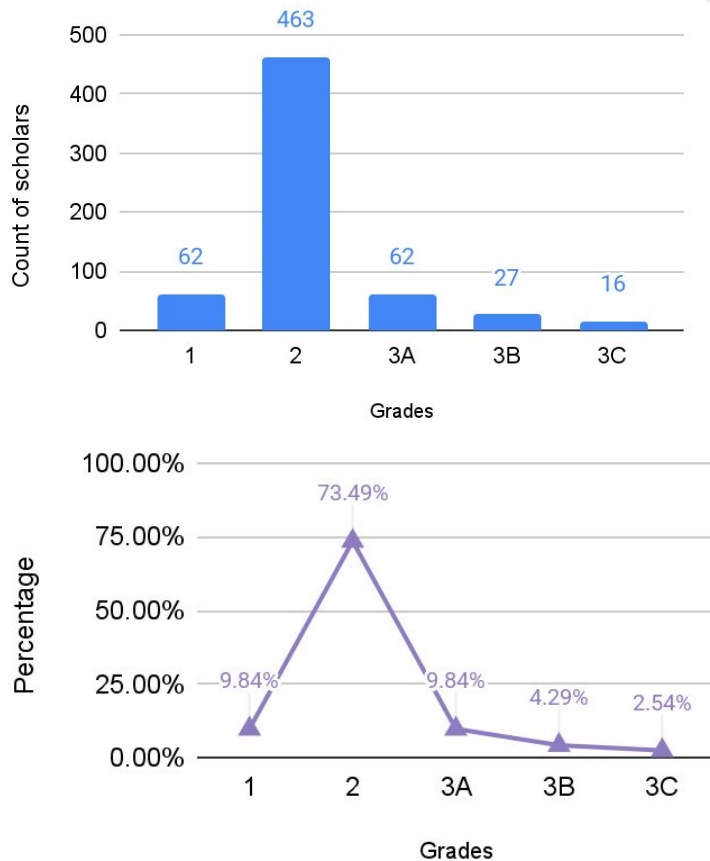


# PMRF Review Count





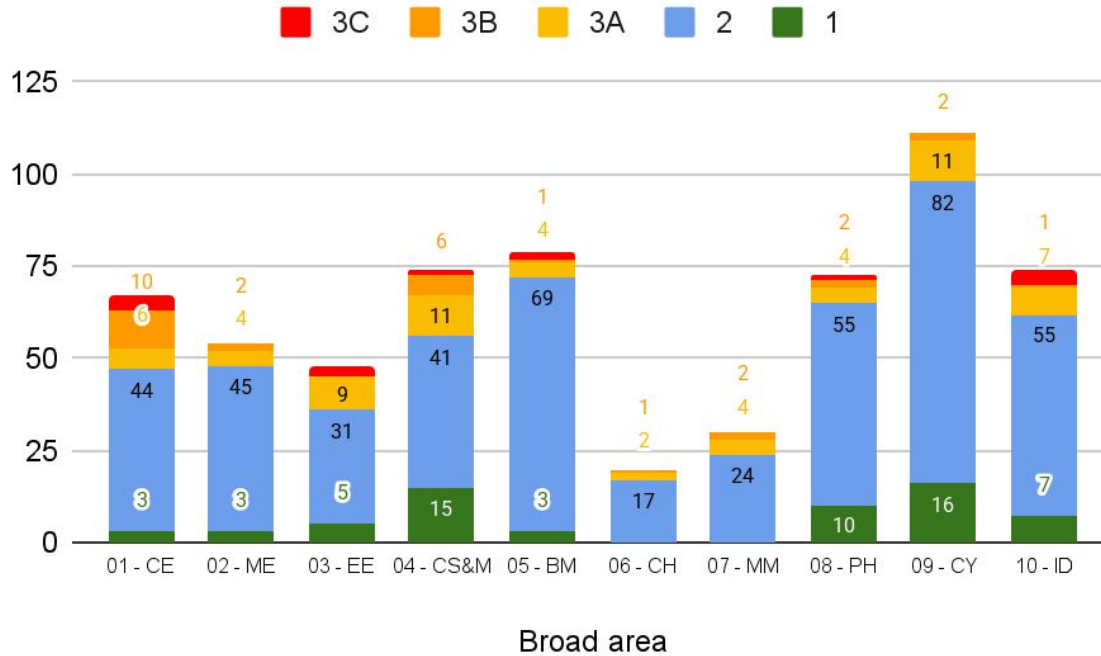
# December 2025 - Grade Analysis



Broad area	1	2	3A	3B	3C	Grand Total
01 - CE	3	44	6	10	4	67
02 - ME	3	45	4	2		54
03 - EE	5	31	9		3	48
04 - CS&M	15	41	11	6	1	74
05 - BM	3	69	4	1	2	79
06 - CH		17	2	1		20
07 - MM		24	4	2		30
08 - PH	10	55	4	2	2	73
09 - CY	16	82	11	2		111
10 - ID	7	55	7	1	4	74
Grand Total	62	463	62	27	16	630



# Comparison Between Broad Areas

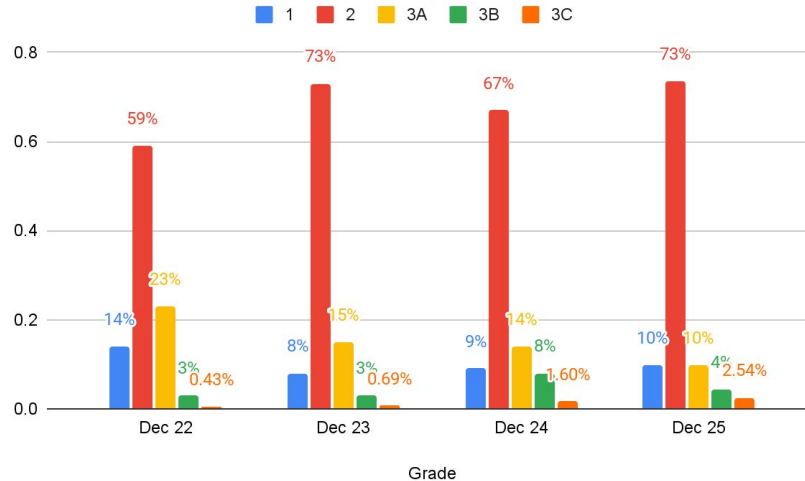


Grade	Highest %	Lowest %
1	CS&M - 20%	CH, MM - 0%
2	BM - 87%	CS&M - 55%
3A	EE - 19%	BM, PH - 5%
3B	CE - 15%	EE - 0%
3C	CE, EE - 6%	ME,CH,CY,MM - 0%



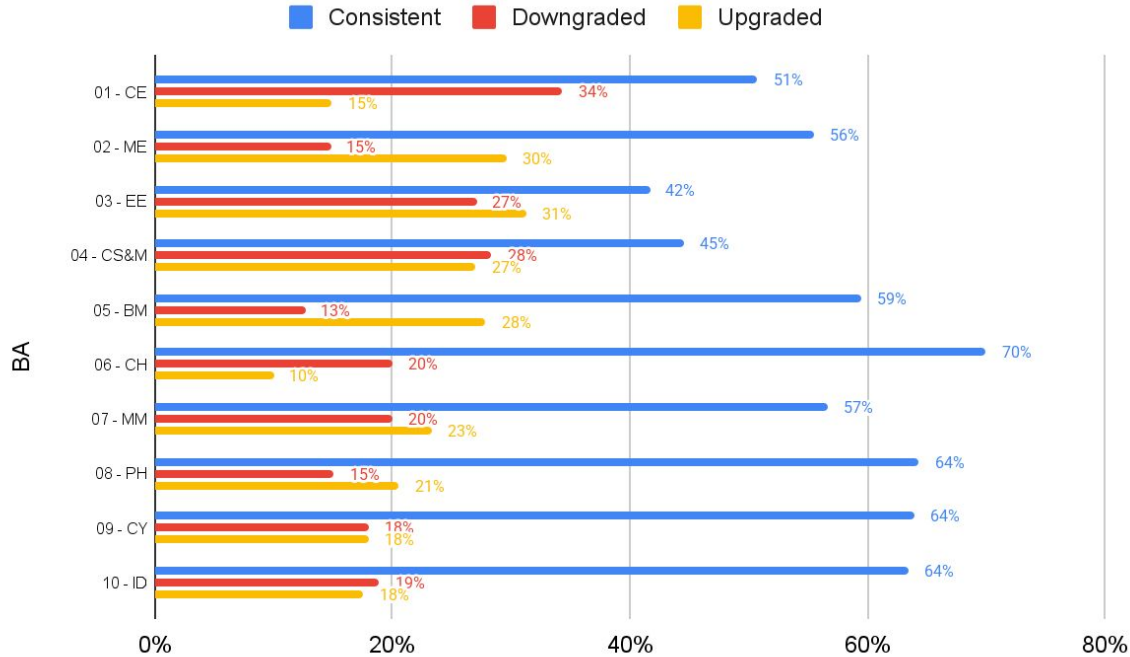
# Dec Review - Comparison (in %)

Grade	Dec 22	Dec 23	Dec 24	Dec 25
1	14%	8%	9%	10%
2	59%	73%	67%	73%
3A	23%	15%	14%	10%
3B	3%	3%	8%	4%
3C	0.43%	0.69%	1.60%	3%





# Grade - Trend Analysis



BA	Consistent	Downgraded	Upgraded
01 - CE	34	23	10
02 - ME	30	8	16
03 - EE	20	13	15
04 - CS&M	33	21	20
05 - BM	47	10	22
06 - CH	14	4	2
07 - MM	17	6	7
08 - PH	47	11	15
09 - CY	71	20	20
10 - ID	47	14	13





# Consolidated - Institute-wise Results - Dec 2025

Institute	1	2	3A	3B	3C	Grand Total
IIT Bombay	7 (8.97%)	63 (80.77%)	4 (5.13%)	2 (2.56%)	2 (2.56%)	78
IISc Bangalore	13 (17.57%)	52 (70.27%)	9 (12.16%)	(0.00%)	(0.00%)	74
IIT Madras	9 (12.50%)	51 (70.83%)	6 (8.33%)	4 (5.56%)	2 (2.78%)	72
IIT Kanpur	3 (5.56%)	41 (75.93%)	5 (9.26%)	4 (7.41%)	1 (1.85%)	54
IIT Delhi	6 (11.76%)	37 (72.55%)	4 (7.84%)	3 (5.88%)	1 (1.96%)	51
IIT Roorkee	1 (2.04%)	34 (69.39%)	8 (16.33%)	2 (4.08%)	4 (8.16%)	49
IIT Kharagpur	5 (13.89%)	26 (72.22%)	5 (13.89%)	(0.00%)	(0.00%)	36
IIT Guwahati	3 (8.82%)	26 (76.47%)	3 (8.82%)	1 (2.94%)	1 (2.94%)	34
IIT Hyderabad	3 (14.29%)	15 (71.43%)	2 (9.52%)	1 (4.76%)	(0.00%)	21
IIT Indore	2 (10.53%)	16 (84.21%)	1 (5.26%)	(0.00%)	(0.00%)	19
IIT Gandhinagar	1 (5.88%)	15 (88.24%)	1 (5.88%)	(0.00%)	(0.00%)	17
IIT BHU	1 (6.67%)	10 (66.67%)	3 (20.00%)	1 (6.67%)	(0.00%)	15



# Consolidated - Institute-wise Results - Dec 2025

Institute	1	2	3A	3B	3C	Grand Total
IISER Thiruvananthapuram	2 (15.38%)	9 (69.23%)	2 (15.38%)	(0.00%)	(0.00%)	13
IIT ISM Dhanbad	1 (11.11%)	3 (33.33%)	2 (22.22%)	3 (33.33%)	(0.00%)	9
IIT Jodhpur	(0.00%)	6 (66.67%)	2 (22.22%)	1 (11.11%)	(0.00%)	9
IIT Patna	1 (11.11%)	6 (66.67%)	1 (11.11%)	1 (11.11%)	(0.00%)	9
IIT Ropar	(0.00%)	7 (87.50%)	(0.00%)	1 (12.50%)	(0.00%)	8
IISER Bhopal	(0.00%)	4 (66.67%)	1 (16.67%)	(0.00%)	1 (16.67%)	6
IISER Pune	1 (16.67%)	5 (83.33%)	(0.00%)	(0.00%)	(0.00%)	6
IISER Kolkata	(0.00%)	5 (100.00%)	(0.00%)	(0.00%)	(0.00%)	5
IISER Mohali	1 (20.00%)	4 (80.00%)	(0.00%)	(0.00%)	(0.00%)	5
University of Hyderabad	(0.00%)	4 (80.00%)	(0.00%)	1 (20.00%)	(0.00%)	5
Aligarh Muslim University	(0.00%)	2 (50.00%)	(0.00%)	1 (25.00%)	1 (25.00%)	4
IISER Tirupati	1 (25.00%)	3 (75.00%)	(0.00%)	(0.00%)	(0.00%)	4



# Consolidated - Institute-wise Results - Dec 2025

Institute	1	2	3A	3B	3C	Grand Total
IIT Mandi	(0.00%)	3 (75.00%)	(0.00%)	(0.00%)	1 (25.00%)	4
Banaras Hindu University	1 (33.33%)	1 (33.33%)	(0.00%)	(0.00%)	1 (33.33%)	3
IIT Jammu	(0.00%)	3 (100.00%)	(0.00%)	(0.00%)	(0.00%)	3
IIT Palakkad	(0.00%)	2 (66.67%)	1 (33.33%)	(0.00%)	(0.00%)	3
National Institute of Technology Tiruchirappalli	(0.00%)	1 (33.33%)	1 (33.33%)	(0.00%)	1 (33.33%)	3
IIT Bhubaneswar	(0.00%)	2 (100.00%)	(0.00%)	(0.00%)	(0.00%)	2
IIT Dharwad	(0.00%)	1 (50.00%)	(0.00%)	1 (50.00%)	(0.00%)	2
IIT Tirupati	(0.00%)	1 (50.00%)	1 (50.00%)	(0.00%)	(0.00%)	2
Jawaharlal Nehru University	(0.00%)	2 (100.00%)	(0.00%)	(0.00%)	(0.00%)	2
IISER Berhampur	(0.00%)	1 (100.00%)	(0.00%)	(0.00%)	(0.00%)	1
Jamia Millia Islamia	(0.00%)	1 (100.00%)	(0.00%)	(0.00%)	(0.00%)	1
University of Delhi	(0.00%)	1 (100.00%)	(0.00%)	(0.00%)	(0.00%)	1

# Thank you!

